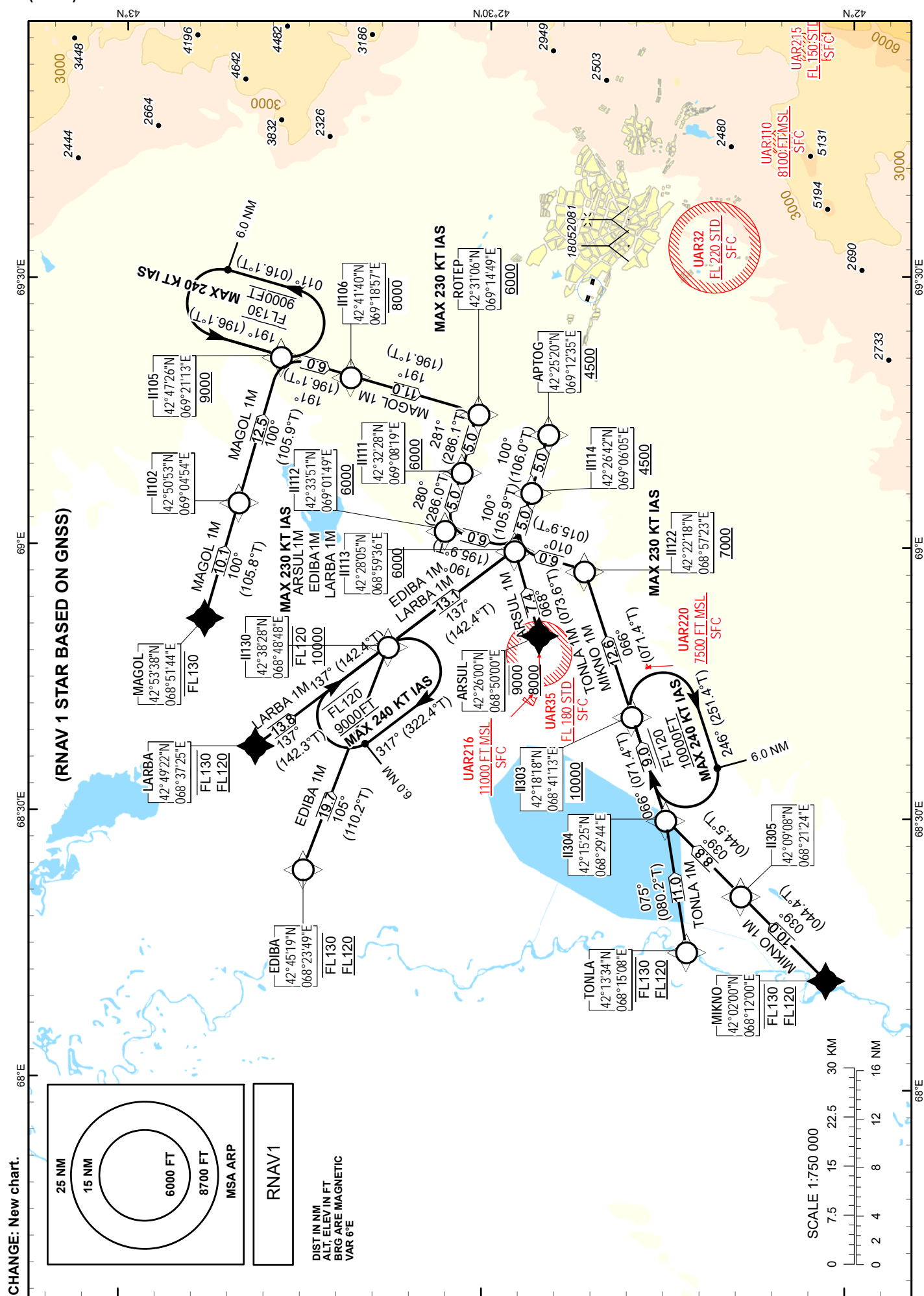


SHYMKENT
RWY 10

TABULAR DESCRIPTION

ARSUL 1M											
Serial Number	Path Descriptor	Waypoint Identifier	Fly - over	Course °M(°T)	Magnetic Variation(°)	Distance NM	Turn Direction	Altitude FT	Speed KT	VPA (°)	Navigation Specification
10	IF	ARSUL	-	-	+5.5	-	-	+8000 -9000	-	-	RNAV 1
20	TF	II113	-	068(073.6)	+5.5	7.4	R	+6000	-230	-2.5	RNAV 1
30	TF	II114	-	100(105.9)	+5.5	5.0	R	+4500	-	-	RNAV 1
40	TF	APTOG	-	100(106.0)	+5.5	5.0	-	+4500	-	-2.8	RNAV 1

EDIBA 1M											
Serial Number	Path Descriptor	Waypoint Identifier	Fly - over	Course °M(°T)	Magnetic Variation(°)	Distance NM	Turn Direction	Altitude FT	Speed KT	VPA (°)	Navigation Specification
10	IF	EDIBA	-	-	+5.5	-	-	+FL120 -FL130	-	-	RNAV 1
20	TF	II130	-	105(110.2)	+5.5	19.7	L	+10000 -FL120	-	-1.4	RNAV 1
30	TF	II113	-	137(142.4)	+5.5	13.1	R	+6000	-230	-2.9	RNAV 1
40	TF	II114	-	100(105.9)	+5.5	5.0	L	+4500	-	-	RNAV 1
50	TF	APTOG	-	100(106.0)	+5.5	5.0	-	+4500	-	-2.8	RNAV 1

LARBA 1M											
Serial Number	Path Descriptor	Waypoint Identifier	Fly - over	Course °M(°T)	Magnetic Variation(°)	Distance NM	Turn Direction	Altitude FT	Speed KT	VPA (°)	Navigation Specification
10	IF	LARBA	-	-	+5.5	-	-	+FL120 -FL130	-	-	RNAV 1
20	TF	II130	-	137(142.3)	+5.5	13.8	L	+10000 -FL120	-	-1.4	RNAV 1
30	TF	II113	-	137(142.4)	+5.5	13.1	-	+6000	-230	-2.9	RNAV 1
40	TF	II114	-	100(105.9)	+5.5	5.0	L	+4500	-	-	RNAV 1
50	TF	APTOG	-	100(106.0)	+5.5	5.0	-	+4500	-	-2.8	RNAV 1

MAGOL 1M											
Serial Number	Path Descriptor	Waypoint Identifier	Fly - over	Course °M(°T)	Magnetic Variation(°)	Distance NM	Turn Direction	Altitude FT	Speed KT	VPA (°)	Navigation Specification
10	IF	MAGOL	-	-	+5.5	-	-	-FL130	-	-	RNAV 1
20	TF	II102	-	100(105.8)	+5.5	10.1	L	-	-	-0.9	RNAV 1
30	TF	II105	-	100(105.9)	+5.5	12.5	-	+9000	-	-1.5	RNAV 1
40	TF	II106	-	191(196.1)	+5.5	6.0	R	-8000	-	-3.1	RNAV 1
50	TF	ROTEP	-	191(196.1)	+5.5	11.0	-	+6000	-230	-1.7	RNAV 1
60	TF	II111	-	281(286.1)	+5.5	5.0	R	+6000	-	-	RNAV 1
70	TF	II112	-	280(286.0)	+5.5	5.0	-	+6000	-	-	RNAV 1
80	TF	II113	-	190(195.9)	+5.5	6.0	L	+6000	-	-	RNAV 1
90	TF	II114	-	100(105.9)	+5.5	5.0	L	+4500	-	-	RNAV 1
100	TF	APTOG	-	100(106.0)	+5.5	5.0	-	+4500	-	-2.8	RNAV 1

MIKNO 1M											
Serial Number	Path Descriptor	Waypoint Identifier	Fly - over	Course °M(°T)	Magnetic Variation(°)	Distance NM	Turn Direction	Altitude FT	Speed KT	VPA (°)	Navigation Specification
10	IF	MIKNO	-	-	+5.5	-	-	+FL120 -FL130	-	-	RNAV 1
20	TF	II305	-	039(044.4)	+5.5	10.0	L	-	-	-	RNAV 1
30	TF	II304	-	039(044.5)	+5.5	8.8	-	-	-	-	RNAV 1
40	TF	II303	-	066(071.4)	+5.5	9.0	R	+10000	-	-3.1	RNAV 1
50	TF	II122	-	066(071.4)	+5.5	12.6	-	+7000	-230	-2.2	RNAV 1
60	TF	II113	-	010(015.9)	+5.5	6.0	L	+6000	-	-1.6	RNAV 1
70	TF	II114	-	100(105.9)	+5.5	5.0	R	+4500	-	-	RNAV 1
80	TF	APTOG	-	100(106.0)	+5.5	5.0	-	+4500	-	-2.8	RNAV 1

TONLA 1M											
Serial Number	Path Descriptor	Waypoint Identifier	Fly - over	Course °M(°T)	Magnetic Variation(°)	Distance NM	Turn Direction	Altitude FT	Speed KT	VPA (°)	Navigation Specification
10	IF	TONLA	-	-	+5.5	-	-	+FL120 -FL130	-	-	RNAV 1
20	TF	II304	-	075(080.2)	+5.5	11.0	-	-	-	-	RNAV 1
30	TF	II303	-	066(071.3)	+5.5	9.0	L	+10000	-	-3.1	RNAV 1
40	TF	II122	-	066(071.4)	+5.5	12.6	-	+7000	-230	-2.2	RNAV 1
50	TF	II113	-	010(015.9)	+5.5	6.0	L	+6000	-	-1.6	RNAV 1
60	TF	II114	-	100(105.9)	+5.5	5.0	R	+4500	-	-	RNAV 1
70	TF	APTOG	-	100(106.0)	+5.5	5.0	-	+4500	-	-2.8	RNAV 1

WAYPOINT LIST

WPT	COORD	
ARSUL	422600.00N	0685000.00E
APTOG	422519.51N	0691234.86E
EDIBA	424519.00N	0682349.00E
II102	425052.98N	0690453.55E
II105	424725.82N	0692113.01E
II106	424139.90N	0691857.25E
II111	423228.48N	0690819.49E
II112	423351.02N	0690149.25E
II113	422804.71N	0685935.76E
II114	422642.29N	0690605.45E
II122	422218.35N	0685722.68E
II130	423828.40N	0684848.42E
II303	421818.04N	0684113.16E
II304	421525.47N	0682943.81E
II305	420908.43N	0682124.45E
LARBA	424922.00N	0683725.00E
MAGOL	425338.00N	0685144.00E
MIKNO	420200.00N	0681200.00E
ROTEP	423105.57N	0691449.44E
TONLA	421334.00N	0681508.00E